



Capital
Mailing Equipment Inc.

CASE
CODER



UC22 A New Level of Performance in Case Coders

FEATURES

- ◆ Most Versatile Case Coder
- ◆ 22mm to 88mm Print Height
- ◆ 1200 dpi Print Quality
- ◆ All-in-One Compact Design
- ◆ Lowest Operational Costs
- ◆ Intuitive Operator Interface

11701 Metro Airport Center Dr, Suite C-101,
Romulus MI 48174
info@CapitalMailingEquipment.com



CapitalMailingEquipment.com
833 263-6245



LOW COST, HIGH QUALITY CASE CODING

Case Coding can be expensive, problematic, and confusing. As new regulations like Sunrise 2027 approach, the current issue with poor-quality prints and performance will only get worse.

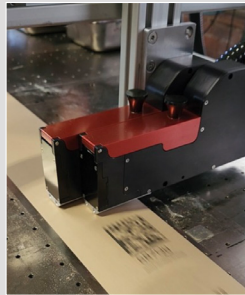
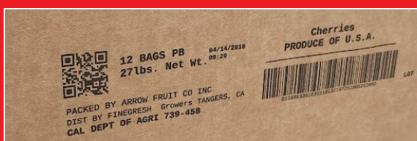
With an All-in-One design and compact size, the UC22 is easy to integrate into almost any packaging line. The coder delivers high-quality prints including alphanumeric, date codes, lot codes, graphics, barcodes, and more. Vega embedded software makes it easy to use for any operator with minimal training or experience, blending design, control, and monitoring into a proven interface.

Understanding the need to improve costs and performance, Norwix is offering impressive performance at a fraction of the cost of other coding solutions, proving that quality can be had at a great price.

STUNNING PRINT QUALITY

Designed to provide outstanding print quality for a wide range of packaging needs, it is capable of producing high-definition, laser-sharp prints for alphanumeric characters, date codes, lot codes, graphics, barcodes, and more. With a maximum print resolution of 1200 dpi, the UC22 Case Coder ensures that the printed content is clear, precise, and meets all labeling requirements, past, present and, very importantly, future.

- ◆ Tall, seamless images
- ◆ Meets Future needs for high density, 2D Barcodes
- ◆ Variable Print Resolution up to 1200dpi



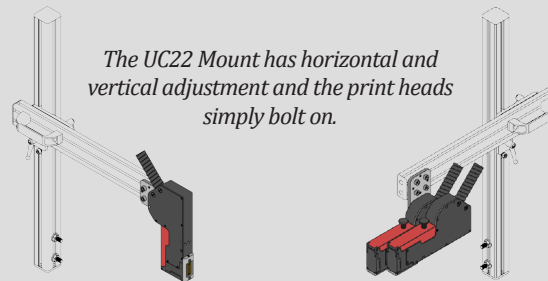
ADVANCED PRINT TECHNOLOGY

UC22, powered by the latest HP TIJ 4.0 technology, a revolutionary advancement generations ahead of competing coding technologies. Engineered for Bulk ink operations, the UC22 ensures maximum reliability, unmatched uptime, and significantly reduced ink costs. Experience superior print quality with higher resolution, high speed, and increased throw distance. With every print cartridge change, you receive a brand-new print head, guaranteeing continuous peak performance. Maximize your uptime and efficiency with the UC22.

UPGRADE EXISTING PRINTERS

The UC22 is a state-of-the-art case coder that outperforms existing systems. Say goodbye to the hassle of complex labels, high-maintenance Piezos, and messy high-temperature waxes. By incorporating the UC22 into any packaging environment, you'll get enhanced quality, improved reliability, and reduced maintenance and consumable costs.

The UC22 features a compact and feature rich controller with a small printhead footprint for easy installation in any packaging environment. With the optional bench stand, no additional mounting space next to the line is needed; the UC22 can be installed with minimal disruption to existing operations.

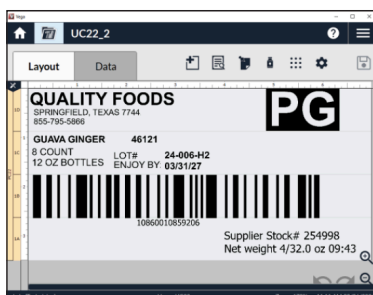


The UC22 Mount has horizontal and vertical adjustment and the print heads simply bolt on.

INTUITIVE SOFTWARE

Norwix enterprise-level Vega software is a top performer in industrial printing systems. Its extremely powerful, intuitive, and simple-to-use interface makes it an obvious choice in a packaging environment. It can quickly integrate into external systems, retrieving template data from remote databases and other packaging equipment. Print Template Design, Monitoring, and Management are all conducted from the 11.6 inch industrial color touch screen for instant accessibility.

- ◆ Powerful template creation with support for alphanumeric, graphics, and latest barcode symbology
- ◆ Feature rich latest software
- ◆ Static and Dynamic data support



HIGH TECHNOLOGY, HIGH PERFORMANCE

Both Sides 2 x 44mm

3.0M or 0.7M UMBILICAL
Carries ink and electrical signals.

22MM PRINT HEAD

Print Heads can be locked together for seamless tall images up to 88mm, or individually placed for coding on two sides of a box.

775ML BULK INK SUPPLY

A large bulk capacity ensures minimal operational costs with little operator intervention. Changeover of the Bulk Cartridge takes only seconds.

UC22 ENCLOSURE

Integrated controller with 11.6" color touchscreen, and Vega software installed.

VEGA SOFTWARE

With its intuitive interfaces and solid, dependable functionality, Norwix enterprise level Vega software is a high performer in the industrial printing systems arena. Create and manage print templates, and monitor production in real time.



POSSIBLE UC22 CONFIGURATIONS

Single Side 22mm



Both Sides 2 x 22mm



Single Side 88mm



Four UC22 Print Heads installed on a Case Taper



Capital
Mailing Equipment

PC108—PERFORMANCE

Horizontal Resolution (DPI)	Max Speed	
	ft/min	m/min
1200	300	92
600	600	183
300	1200	366
150	2400	732

Characteristic	PC108
Print Width	22mm–88mm
Maximum Resolution	1,200 dpi
Drops Size	6 pl
Jetting Frequency	72 kHz
Throw Distance	Up to 7mm*

*Print Speed Dependent

Printable Items	Lot Codes, Date codes, Alphanumeric, Barcodes, Bitmaps, PDF
Bar-code Printing	EAN-13/EAN 8, UPC-A, Code128, ITF-14, ITF-2of5, Code39, Cryptocode, GS1 Datamatrix, QR (114 barcode support included)
Print Density	User Configurable (12.5% - 100%)
Umbilical Length	0.7m and 3m
Ink Type	Aqueous (Black and Spot Colors)
Bulk Solution	775ml Bulk Supply
Electrical Interface	Ethernet, I/O, Sensor, Encoder, Stack Light
Voltage	115V to 240V
Software Included	Vega from Norwix
Connectivity	SQL, Remote Host, ERP
Languages	English, Spanish, German, French, Korean, Chinese, Portuguese
Data File Support	CSV, TXT, MDB, XLS, XLSX, ACCDB

INK USAGE ESTIMATES

The following examples give an estimate of the number of prints you can expect before replacement of the Bulk cartridge. For more information, contact your Norwix sales representative.



22MM TALL —160,500 prints



44MM TALL —77,900 prints



88MM TALL —42,800 prints